



01780 672030  
eastaway.co.uk

9 Templeman Drive, Carlby - PE9 4NQ

Stamford

In Excess of £400,000

# 9 Templeman Drive

Carlby, Stamford

A spacious and beautifully presented link detached home in a popular village between Stamford and Bourne. With a bright, open-plan kitchen, two reception rooms, a south-west facing garden, and the added benefit of no onward chain, this home is ideal for families and those looking for an easy move.

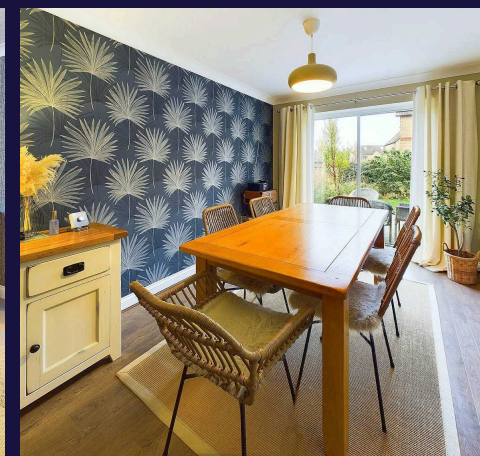
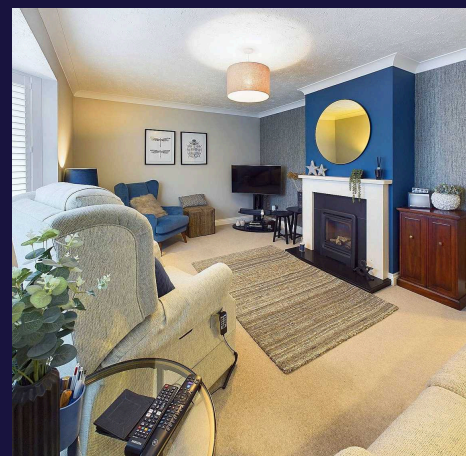
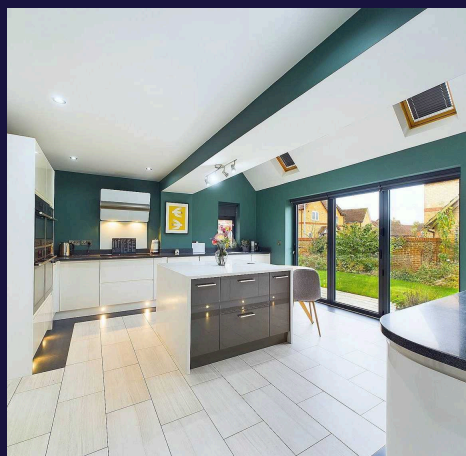
Council Tax band: D

Tenure: Freehold

EPC Energy Efficiency Rating: D

EPC Environmental Impact Rating: E

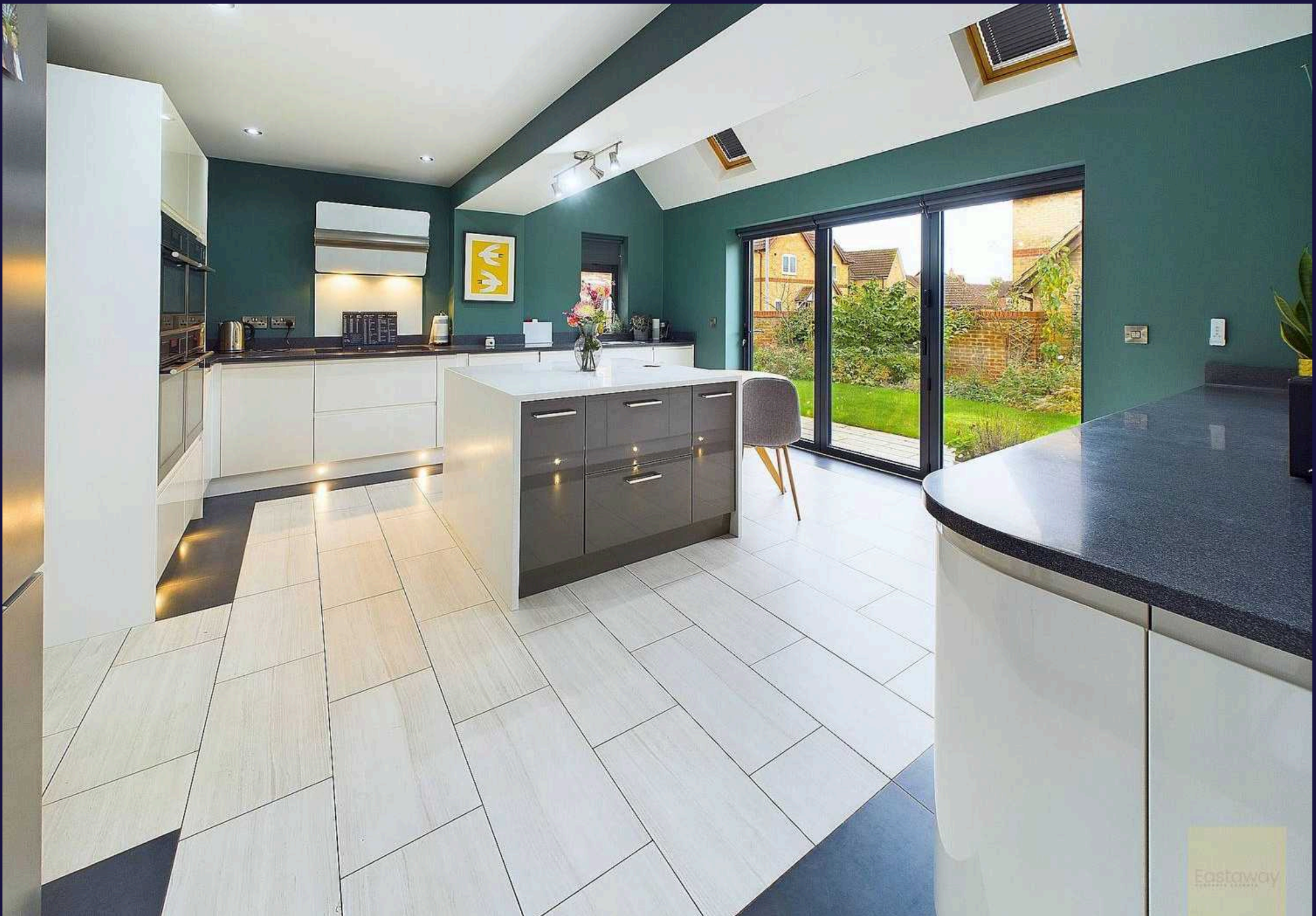
- No onward chain
- Desirable location near Stamford and Bourne
- Driveway parking for two vehicles plus a garage
- Cosy living room with a bay window, plantation shutters, and a gas fire
- Extended kitchen with electric blinds on bifold doors, Velux skylights, and integrated appliances
- Spacious principal bedroom with en-suite and fitted wardrobes
- Enclosed, south-west facing rear garden with patio, lawn, and established planting

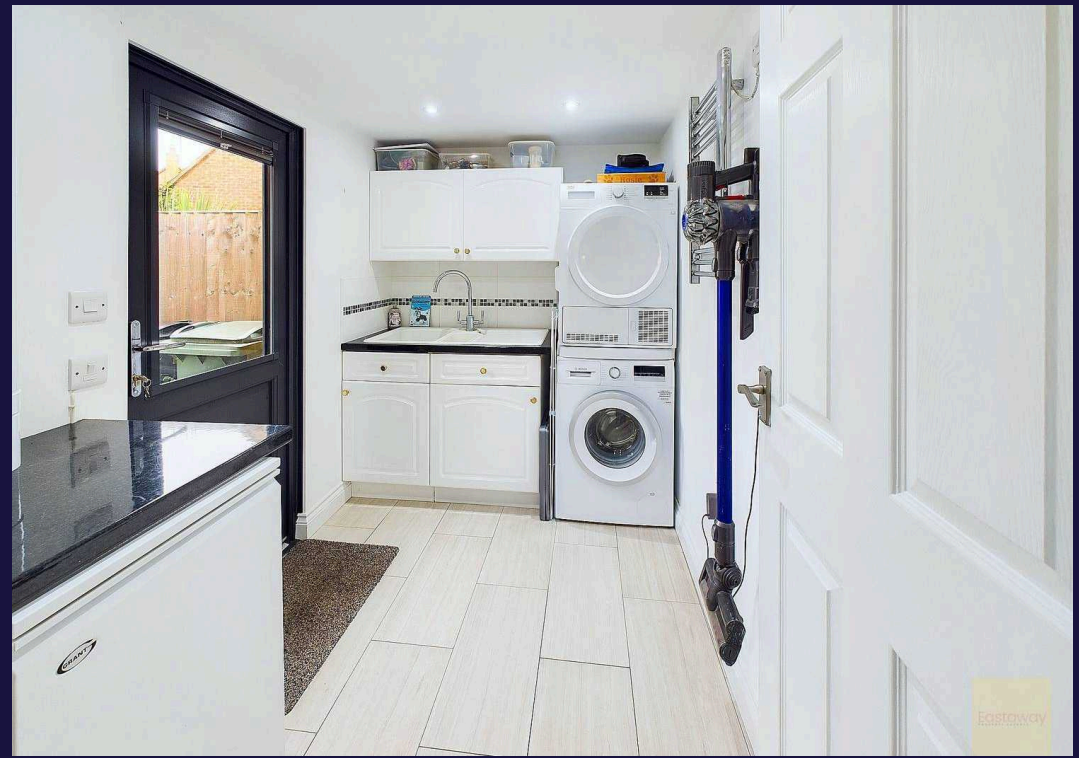
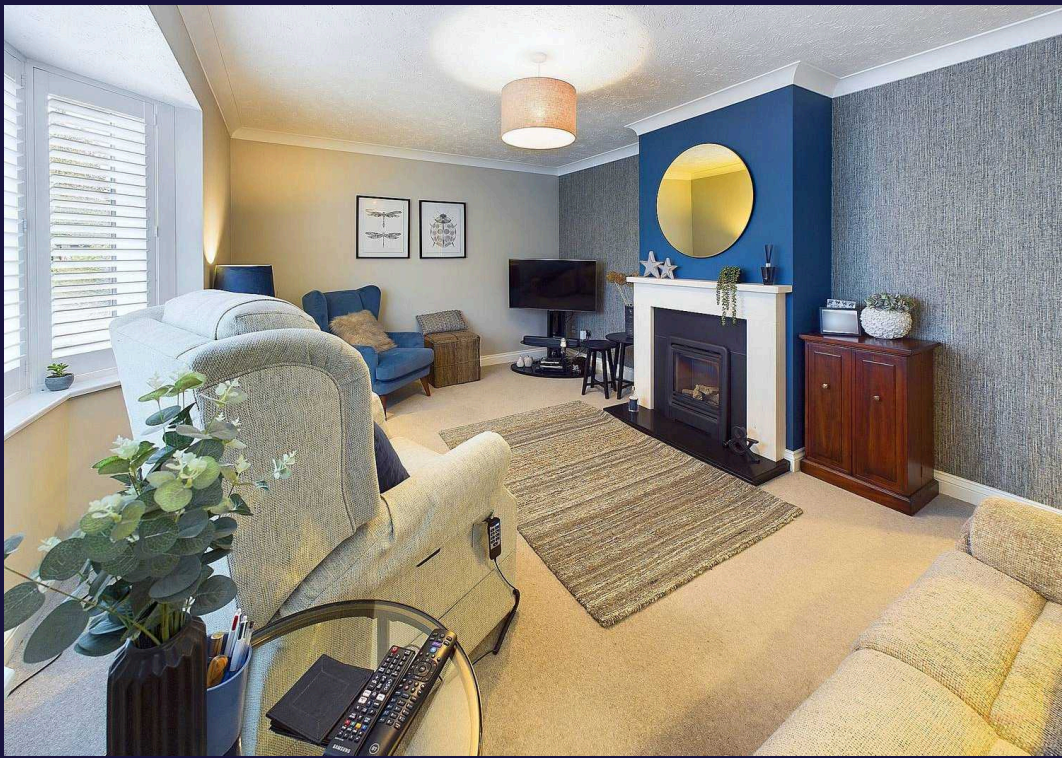


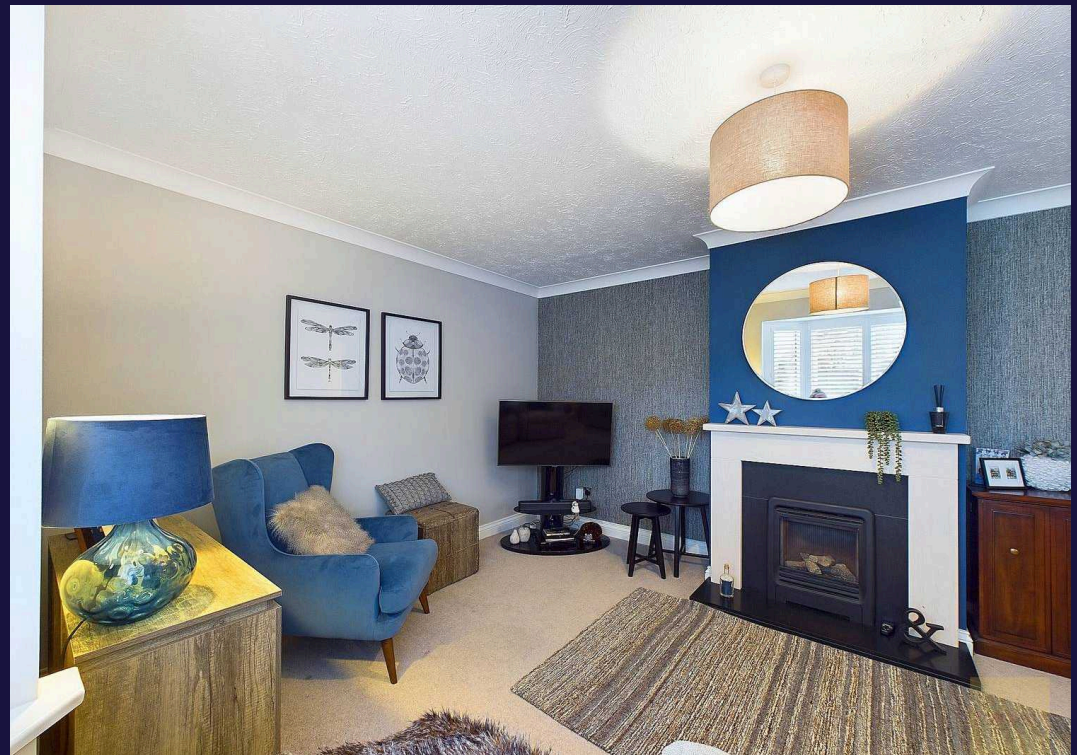
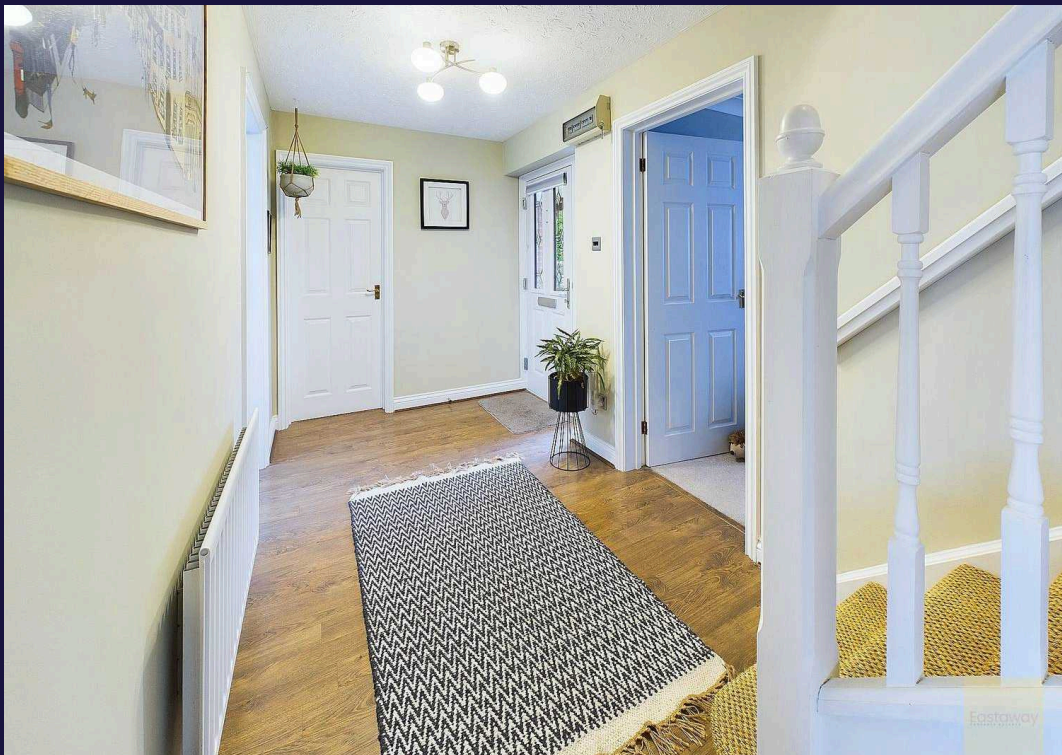
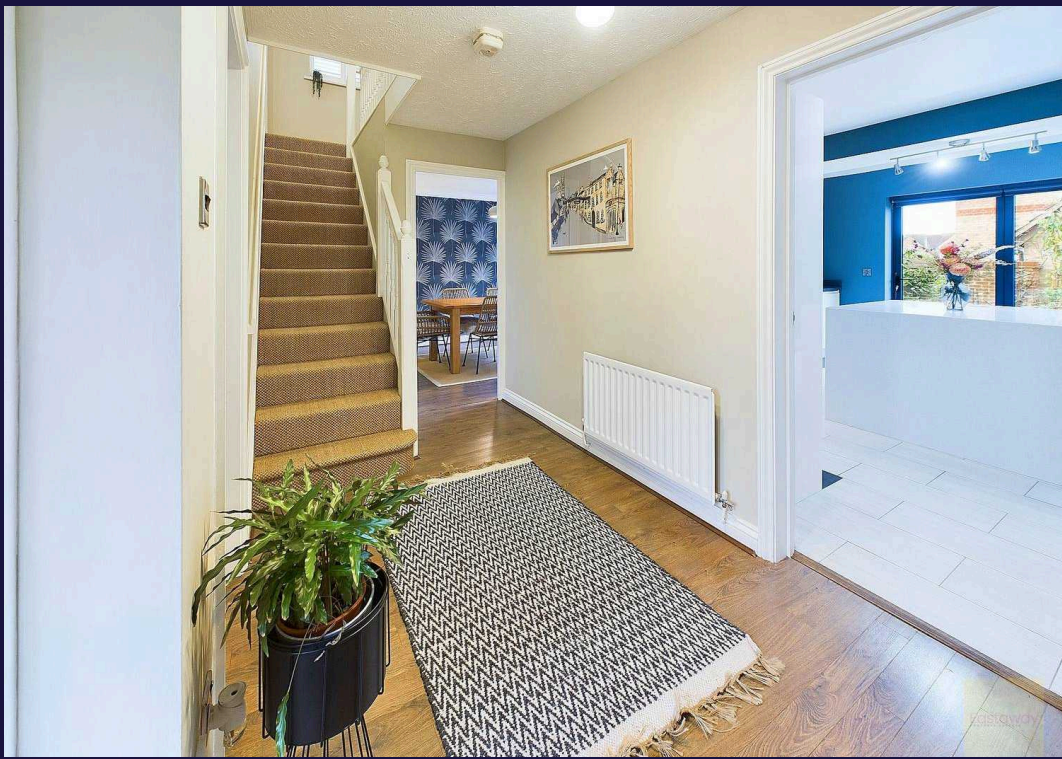
Eastaway



01780 672030  
eastaway.co.uk







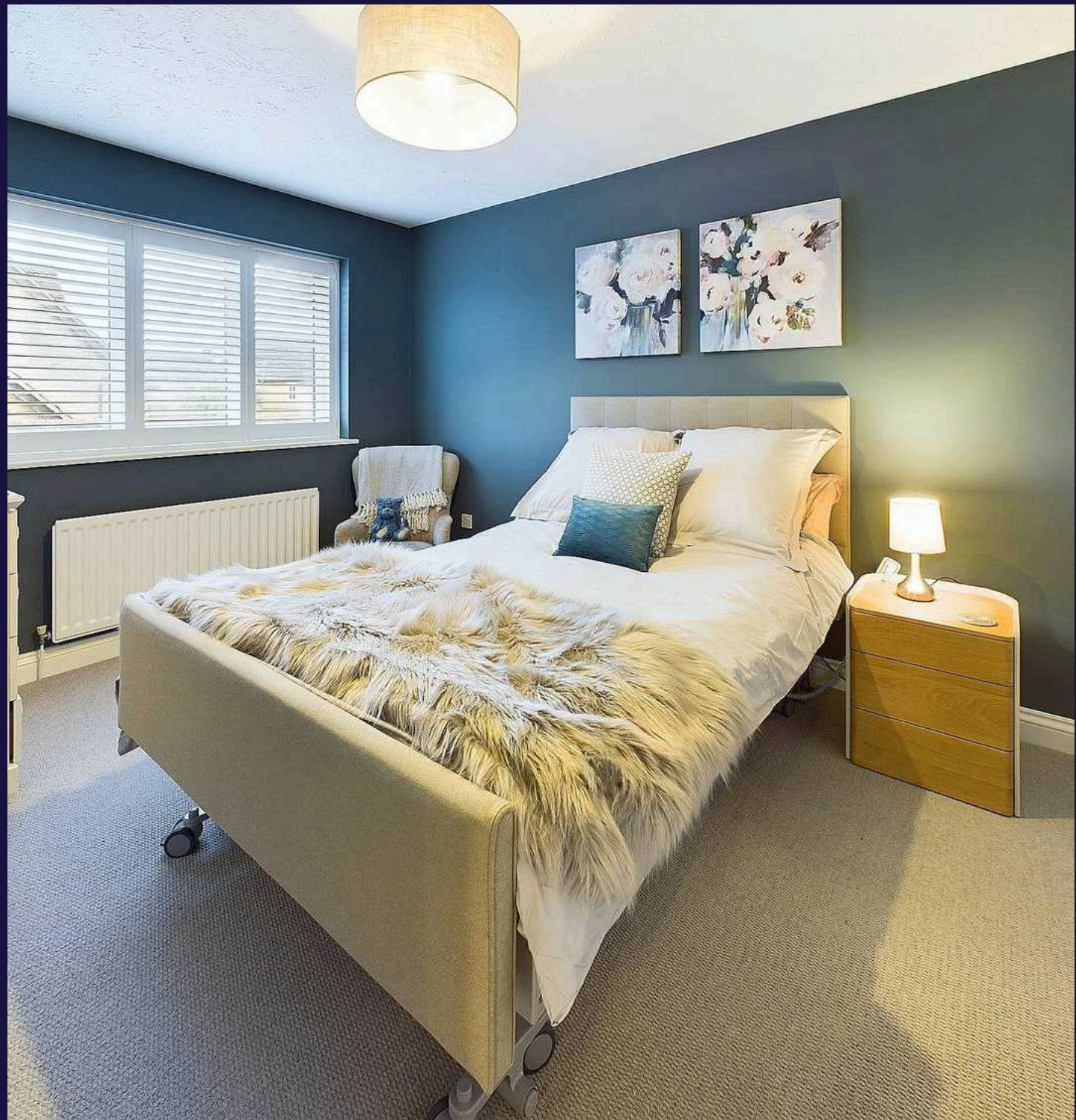
## 9 Templeman Drive

Carlby, Stamford

This charming four-bedroom detached home combines space, style, and functionality, making it a perfect fit for modern family life. Located between Stamford and Bourne, it's convenient for local amenities, schools, and commuter links.

Step inside to find a warm, welcoming home that's been thoughtfully extended and updated. The heart of the house is the stunning kitchen, fully fitted with premium appliances, including four ovens, an induction hob, and an integrated dishwasher. There's ample space for a large American-style fridge/freezer, and the central island provides plenty of room for meal prep or casual dining. Natural light fills the space through bifold doors with electric blinds and two Velux skylights, creating a bright and airy feel. The kitchen flows beautifully onto the south-west facing garden, with a patio area ideal for outdoor dining and a lush lawn surrounded by mature plants for added privacy.

The separate utility room keeps laundry and extra storage out of sight, while the two spacious reception rooms offer flexibility for family living. The living room, with its cosy bay window, plantation shutters, and gas fire, is perfect for relaxing, while the dining room opens onto the garden, making it ideal for entertaining.



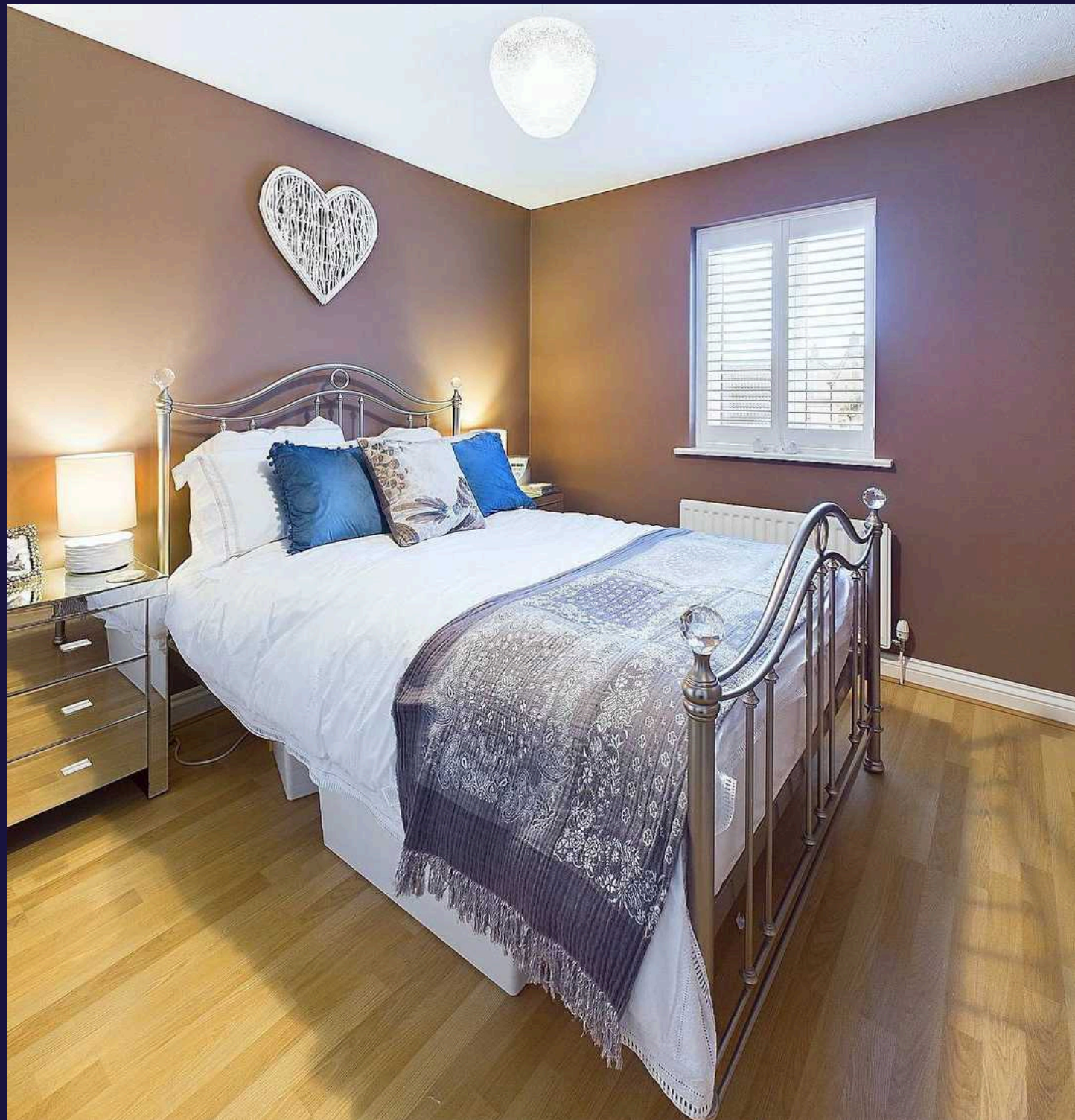
## 9 Templeman Drive

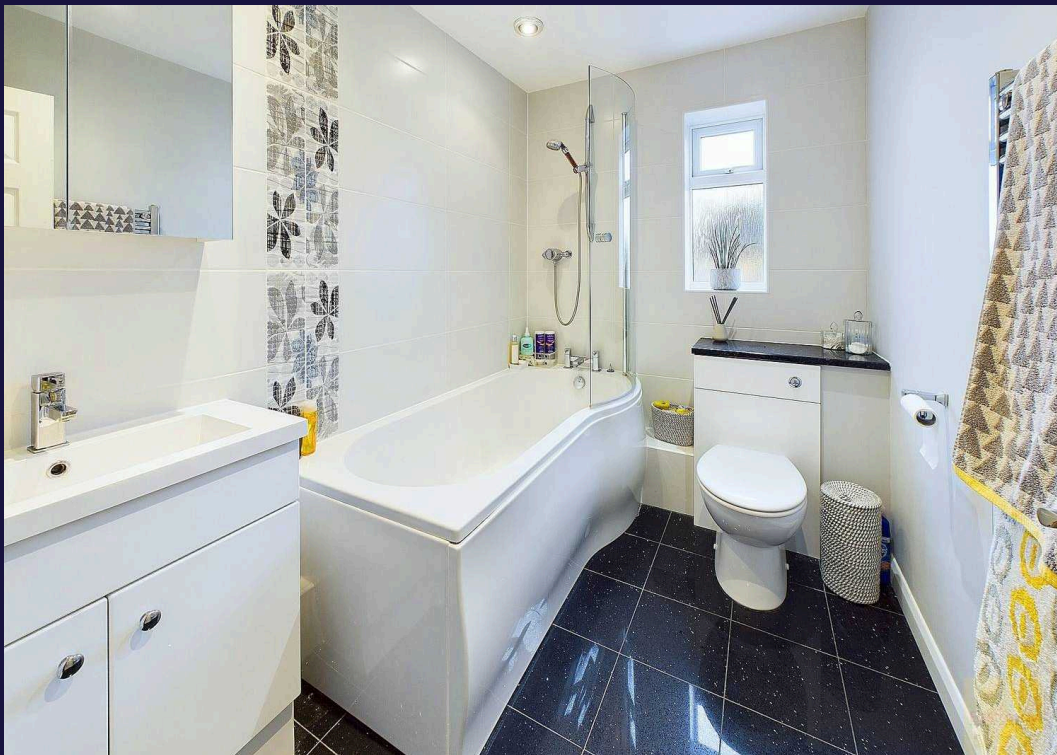
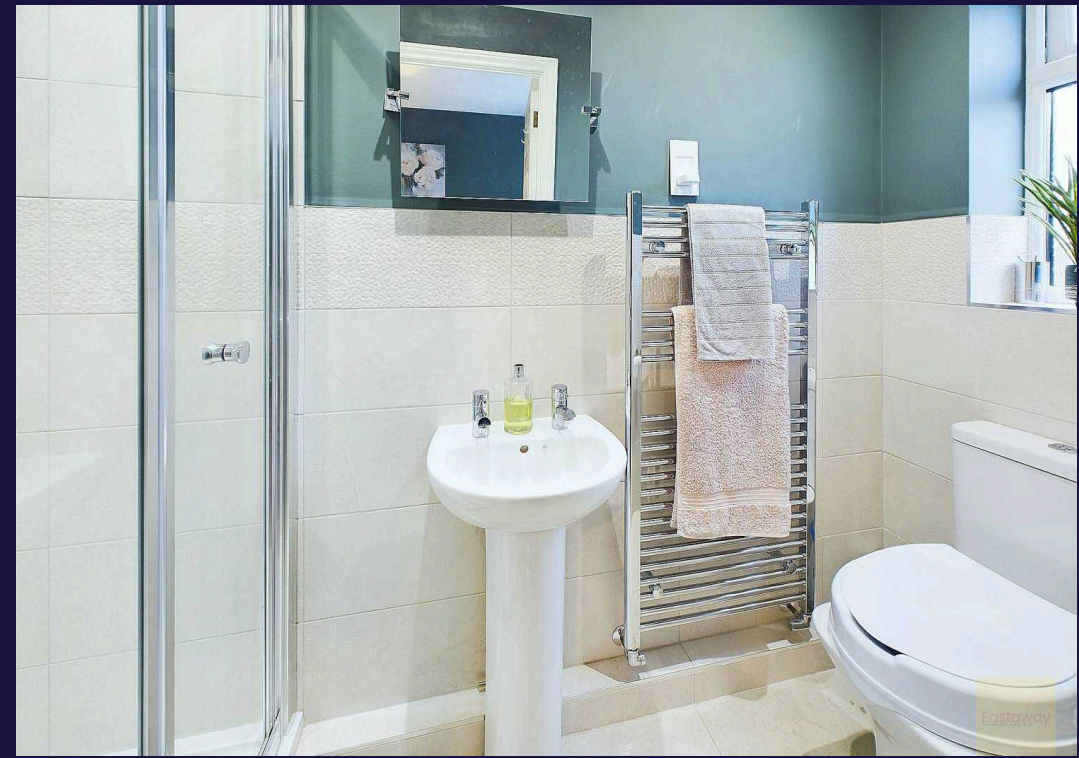
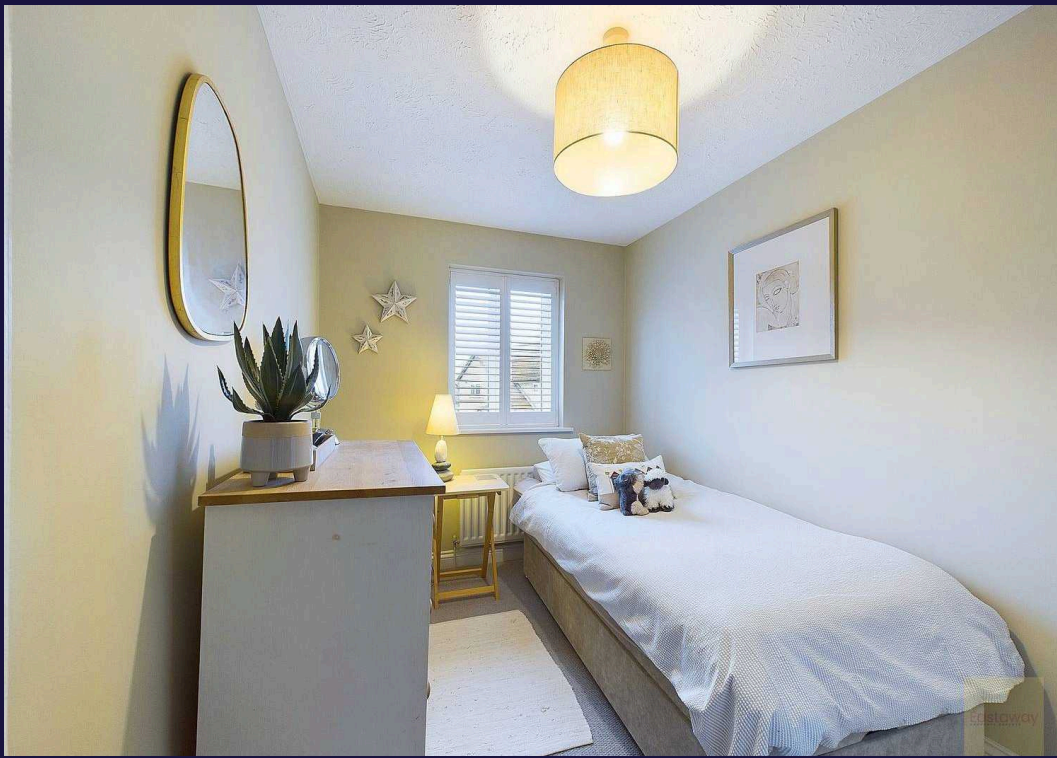
Carlby, Stamford

Upstairs, the principal bedroom features a stylish en-suite and fitted wardrobes. There are three further bedrooms, with bedroom four currently used as a dressing room featuring built-in storage. This makes it a versatile space for guests, a home office, or even a nursery. Plantation shutters are fitted throughout the home, giving it a modern, polished finish and added privacy.

Outside, the driveway offers two-car parking spaces plus an attached garage for extra storage. With the added advantage of no onward chain, this home is move-in ready for anyone looking to settle into a spacious, well-appointed property in a prime location.

- No onward chain
- Desirable location near Stamford and Bourne
- Driveway parking for two vehicles plus a garage
- Cosy living room with a bay window, plantation shutters, and a gas fire
- Extended kitchen with electric blinds on bifold doors, Velux skylights, and integrated appliances
- Spacious principal bedroom with en-suite and fitted wardrobes
- Enclosed, south-west facing rear garden with patio, lawn, and established planting













Ground Floor

**Approximate total area<sup>(1)</sup>**

821.28 ft<sup>2</sup>  
76.3 m<sup>2</sup>

**Reduced headroom**

7.98 ft<sup>2</sup>  
0.74 m<sup>2</sup>

(1) Excluding balconies and terraces

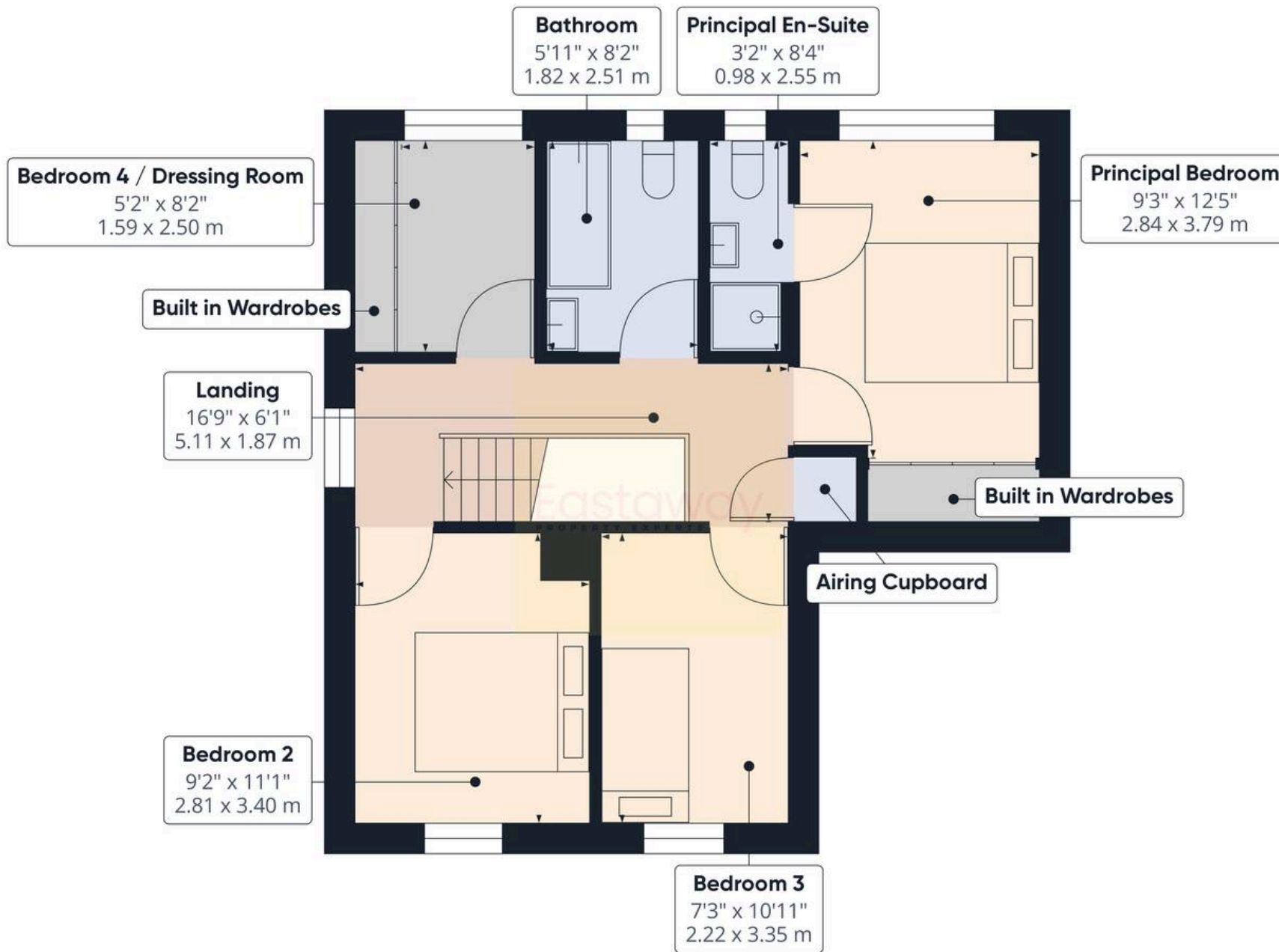
Reduced headroom

..... Below 5 ft/1.5 m

While every attempt has been made to ensure accuracy, all measurements are approximate, not to scale. This floor plan is for illustrative purposes only.

Calculations are based on RICS IPMS 3C standard.





Approximate total area<sup>(1)</sup>

522.04 ft<sup>2</sup>

48.5 m<sup>2</sup>

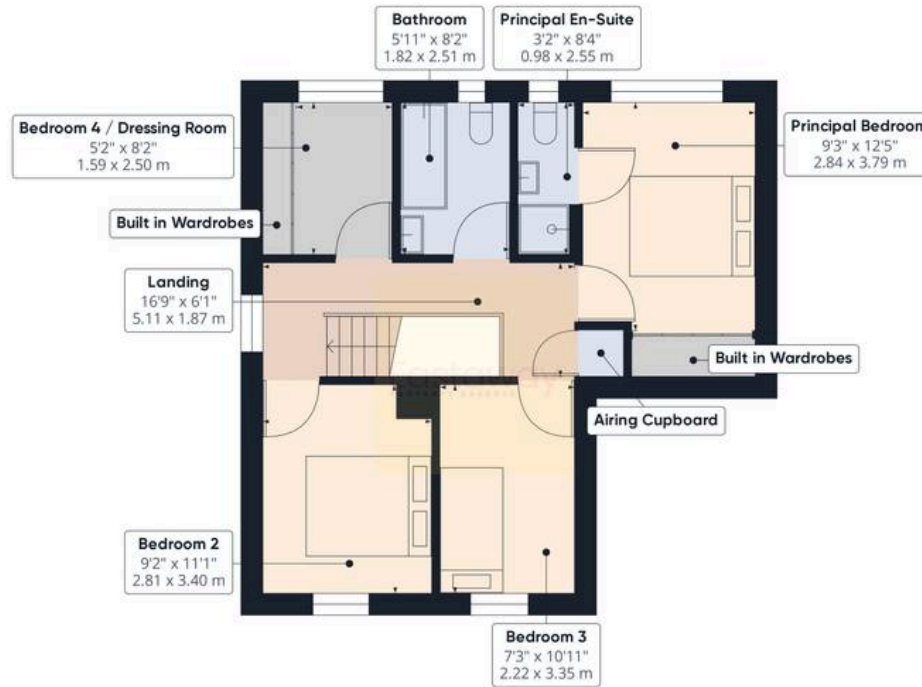
(1) Excluding balconies and terraces

While every attempt has been made to ensure accuracy, all measurements are approximate, not to scale. This floor plan is for illustrative purposes only.

Calculations are based on RICS IPMS 3C standard.



Ground Floor



Floor 1

**Approximate total area<sup>(1)</sup>**

1343.32 ft<sup>2</sup>  
124.8 m<sup>2</sup>

**Reduced headroom**

7.98 ft<sup>2</sup>  
0.74 m<sup>2</sup>

(1) Excluding balconies and terraces

Reduced headroom

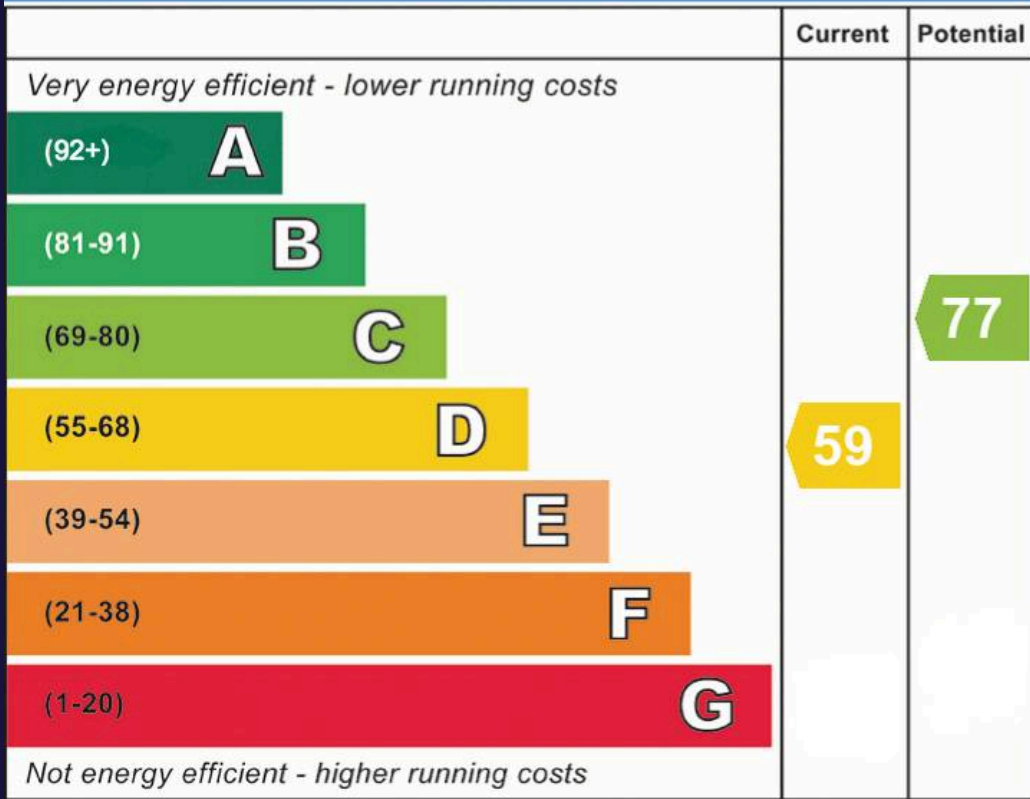
..... Below 5 ft/1.5 m

While every attempt has been made to ensure accuracy, all measurements are approximate, not to scale. This floor plan is for illustrative purposes only.

Calculations are based on RICS IPMS 3C standard.



## Energy Efficiency Rating

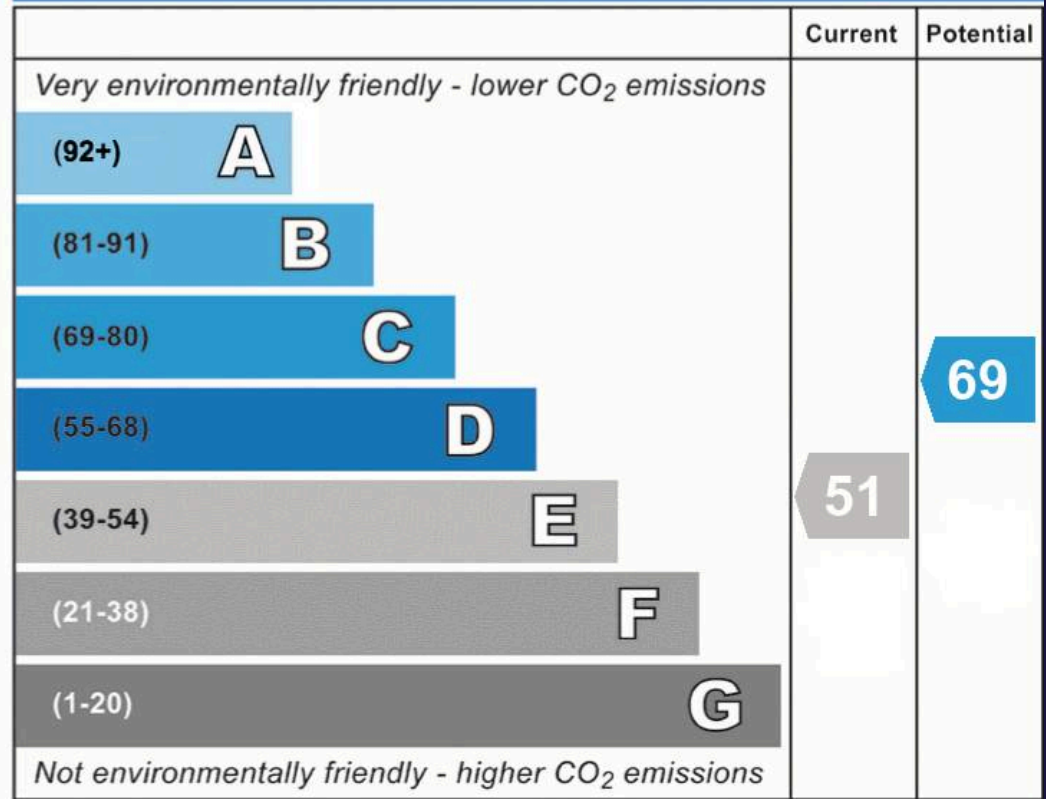


England, Scotland & Wales

EU Directive  
2002/91/EC



## Environmental Impact (CO<sub>2</sub>) Rating



England, Scotland & Wales

EU Directive  
2002/91/EC



#### Buyer Notice and Disclaimer

Eastaway Property strictly adheres to the Consumer Protection from Unfair Trading Regulations 2008 and the National Trading Standards Estate and Letting Agency Team's guidelines. We endeavour to provide precise and reliable property information, including council tax band, price, tenure, and reservation fees. This document is intended for informational purposes only and does not form part of any offer or contract. Potential buyers are encouraged to verify all property details independently. While Eastaway Property makes every effort to ensure accuracy, we accept no liability for any errors or omissions. The property should not be assumed to have all necessary planning, building regulation consents, or other approvals. Eastaway Property employees are not authorised to make or give any representations or warranties regarding this property or enter into any contract on the property's behalf. Our policy ensures impartial and fair treatment of all prospective buyers. To enhance transparency and comply with legal obligations, prospective buyers must complete identification and anti-money laundering checks, including providing proof of funds and completing a source of funds questionnaire, at the offer stage. A fee of £35 inc VAT per person is applicable for these checks.



01780 672030  
eastaway.co.uk

63 Scotgate  
Stamford  
PE9 2YB